

BUSINESS AS *Unusual*

student ideas
competition

imagining a future Australian city

Tell us about your future city.

1. What is the name of your city?

What's mine?

2. Where is your city located?

Our proposal aims to connect abandoned quarry sites across Victoria and potentially nationally and repurpose them. Our first city specifically focuses on the quarry site of LS Quarry at 184 Williams Road, Lima South VIC 3673. In the surrounding area of Lima South there are over eight quarry sites within a 60km radius and the linkages between these abandoned quarry sites will form the crux of our subscription cities.

Geospatial coordinates of city centre: -32.49, 137.77

3. What is the ideal population of your city?

60000

4. What is the impetus behind your city?

In the year 2100, structures will grow from abandoned quarry and industrial sites, revitalising, recycling and rehabilitating the forgotten locations. A re-framing of landscape design and architecture to promote context and living on Country will enhance the way we live, and connect. Living in primarily free standing dwellings, Australians have the capacity to individualise their homes more than other home-owning nations.

We want to still allow for a capacity of individualisation as people can manipulate their houses whilst they live in them. A monthly payment of varying tiers will allow people to move, and relocate between municipalities. As circumstances change, so can the way one lives, yet prices remain predictable and affordable. Short term and long-term solutions are accounted for and a sense of community will be prioritised at all levels.

'What's mine?' is a speculative interrogation into what the future of our Australian cities could look like when it starts to address the technological, environmental and cultural shifts within our country. As our requirements and world change, so should our cities, and so should our dreams.

5. Describe the design of the city.

Landscapes and rural settings will be preserved and rehabilitated, whilst still hosting city lifestyles. We have chosen to repurpose old quarry sites as we believe these sites will be no longer in use in the year 2100. At this site, rock crushers and machinery left inform our architecture and form the base structures of private and public space. The previously excavated and scarred landscape will be utilised and rehabilitated using native species from the Ecological Vegetation Classes (Pre 1750 - Grassy Dry Forest) within the area. The

history of this site will be honoured and will add to the character of the architecture and experience.

Types of subscription will vary and evolve depending on users. Subscription options:

- Traveller subscription - Renewed 6 monthly, for those who intend to travel between the revitalised locations and stay for periods shorter than 2 months in each location.

- Single subscription - Renewed 2 monthly

- Couple subscription - Renewed 2 monthly

- Concession subscription - (note: a concession can be applied to all other subscriptions) - renewed 2 monthly

- Short term/trial subscription - For those who may only wish to trial or stay in a location for 1 month or less. These 'homes' will come fully furnished and act like a hotel, but access to the entire site is available. For a holiday goer or a person requiring emergency housing.

- Small/big family subscription - renewed 2 monthly

6. How does your city embody an alternative Australian dream?

The quintessential Australian dream is a traditional housing model including the quarter acre block, a single detached dwelling, hills hoist clothes line and a back garden. When this dream is interrogated in our current context, it is metropolitan, capital-oriented and Western. As home and land ownership over the past 80 years has become increasingly unattainable, our cities have rapidly expanded to engulf the city fringes with people attempting to fulfil this dream. Our cities are beset with environmental problems and the lines of inequality are only becoming more and more apparent. The traditional Australian housing model will not be feasible for the future and this is seen under the lens of being a bad thing, but what if we flipped the narrative for our future – What if home ownership doesn't have to be the goal?

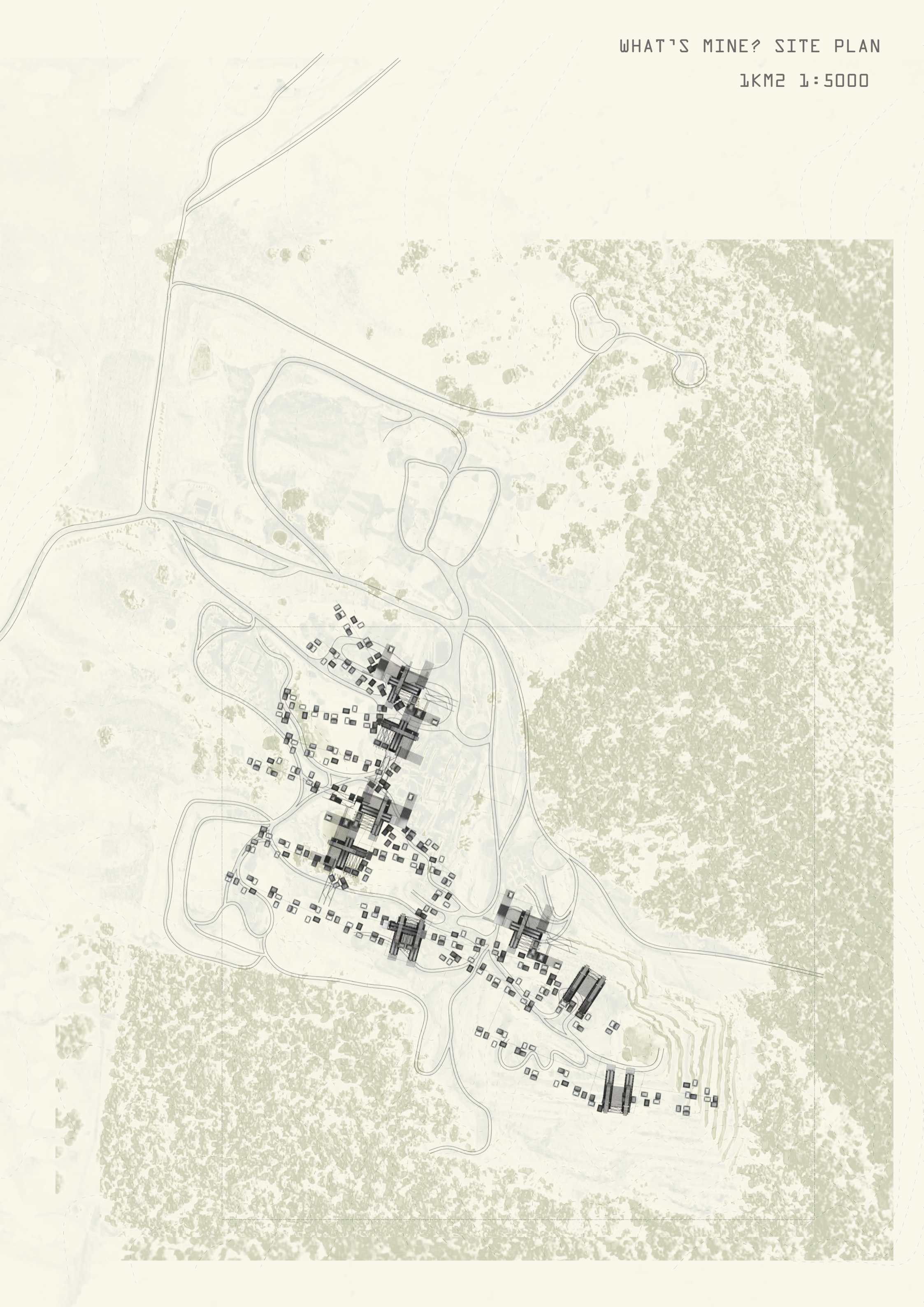
Our proposal considers the way we currently live in the twentieth century and how our lives are becoming more and more subscription based – our music, movies, recreational activities etc – what if our housing and cities followed a similar model? What if we lived in a subscription based city, where a monthly contribution allows you to live in any participating municipality? Could there be a typology of housing that can address our changing notions of home ownership? A more flexible, accessible housing model based more on a kind of subscription rather than the traditional model of mortgage-based purchase or deposit-based contractual rentals.

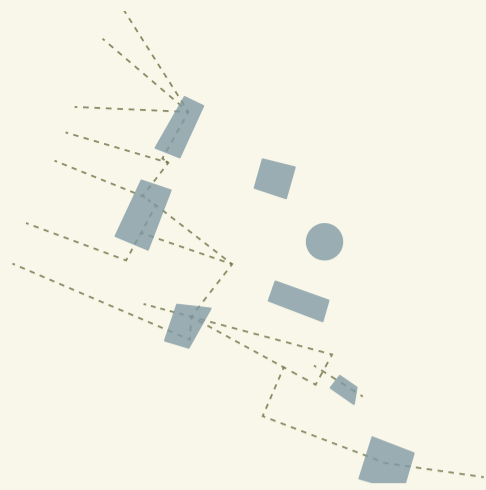
The idea of subscription living, moves users away from ideas of profit, ownership, excess and permanence. It instead focuses more on shared success and living with what you need at a reasonable cost. This model would also buy you greater flexibility and quality. The flexibility to come and go at short notice, to upgrade up and down-spec as circumstances in life inevitably change, as well as to readily move locations and travel to different cities – countries even – with the same provider. Competition would come in the form of the quality of the communal spaces, amenities and programme of events as well as the opportunities to travel. In this case, 'leasing' does not result in one individual to profit at the cost of another, and not one person owns everything. The recurring payments will ultimately be put back into the community and be spent on improving the lives and living conditions of all in the subscription model.

Our proposal starts to speak to a philosophy that is emerging that has to do with our relationship with ownership, possession and place. That feeling of belonging, community, or sense of place no longer has to be dependent on owning bricks and mortar in a specific and fixed location. We propose an Australian Dream that should become an attainable reality, that embraces cohabitation, living on Country, and unsubscribes from home ownership.

WHAT'S MINE? SITE PLAN

1KM2 1:5000



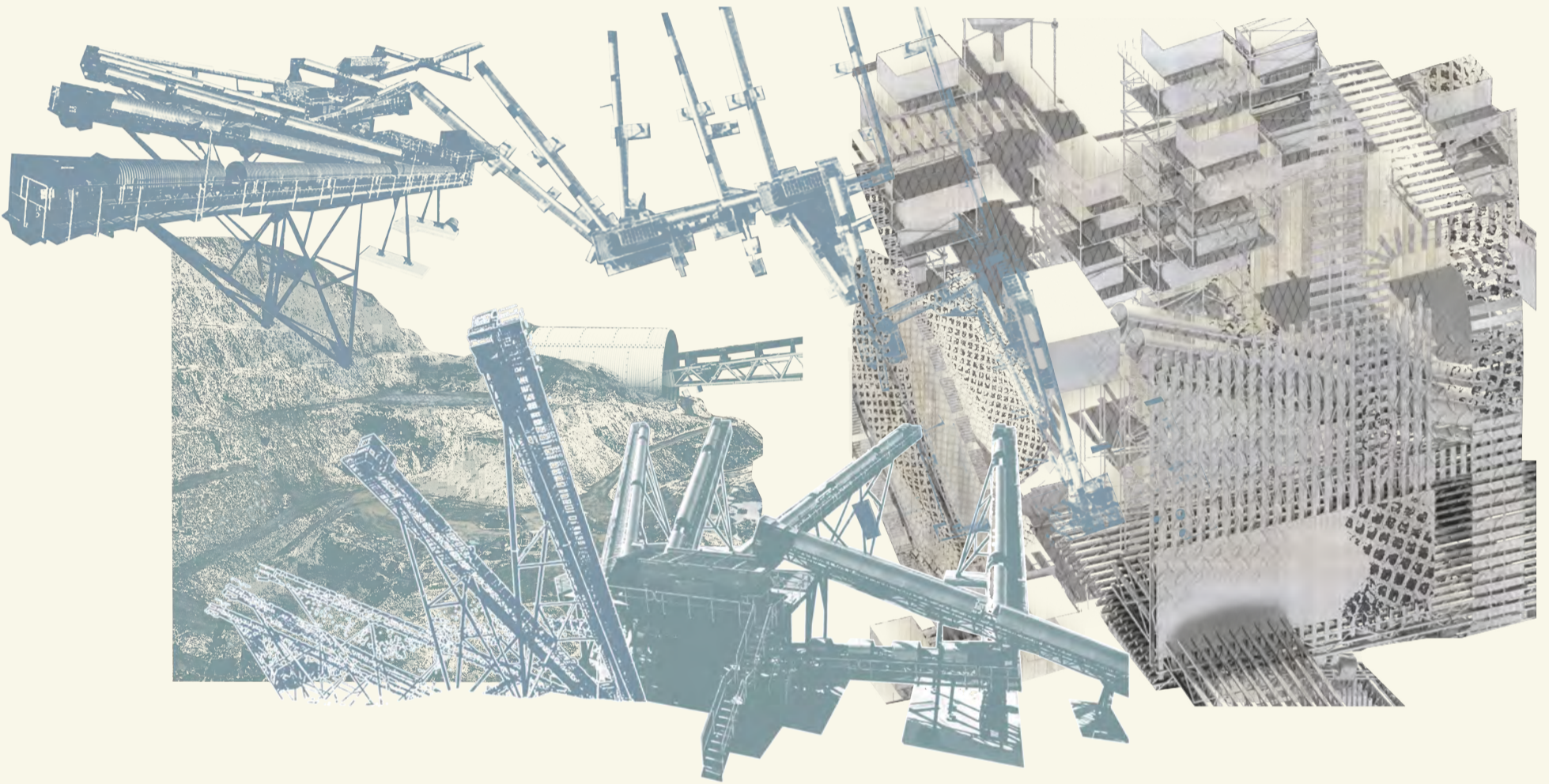


URBAN SPATIAL ARRANGMENT

PUBLIC

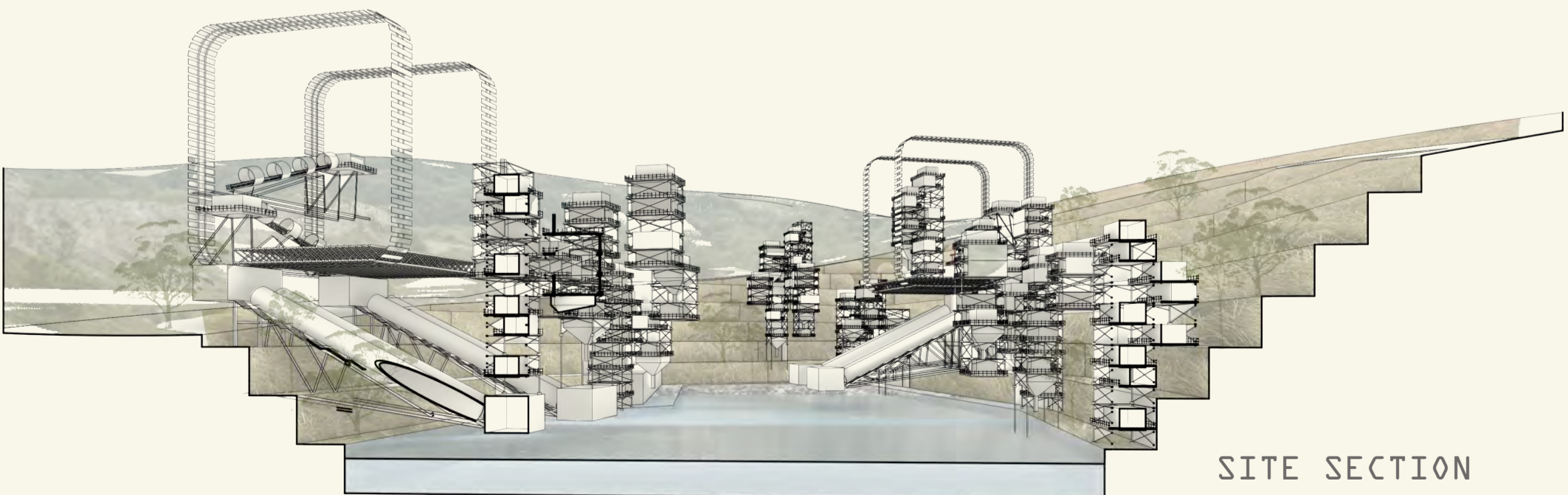


RESIDENTIAL



OBJECT COLLAGE

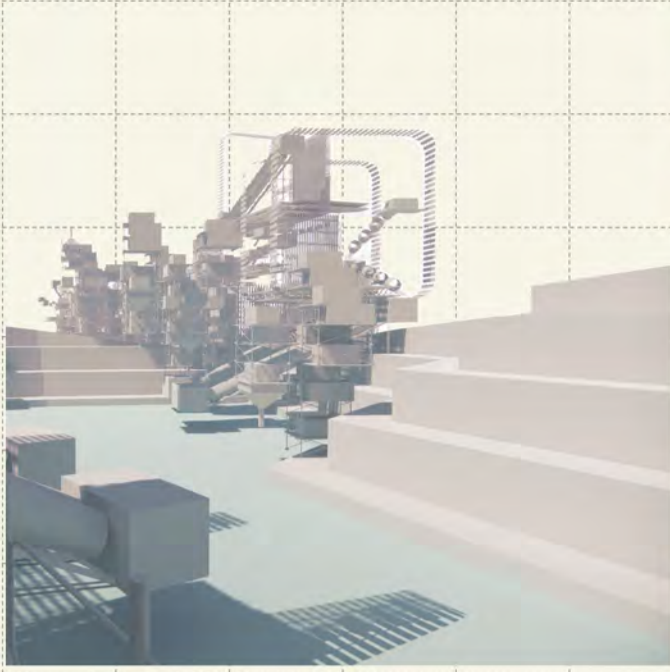
MATERIAL COLLAGE



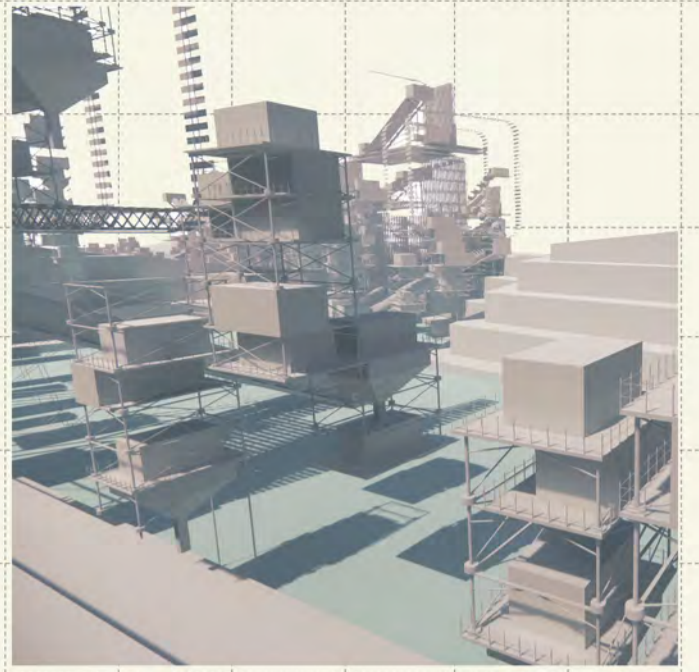
SITE SECTION



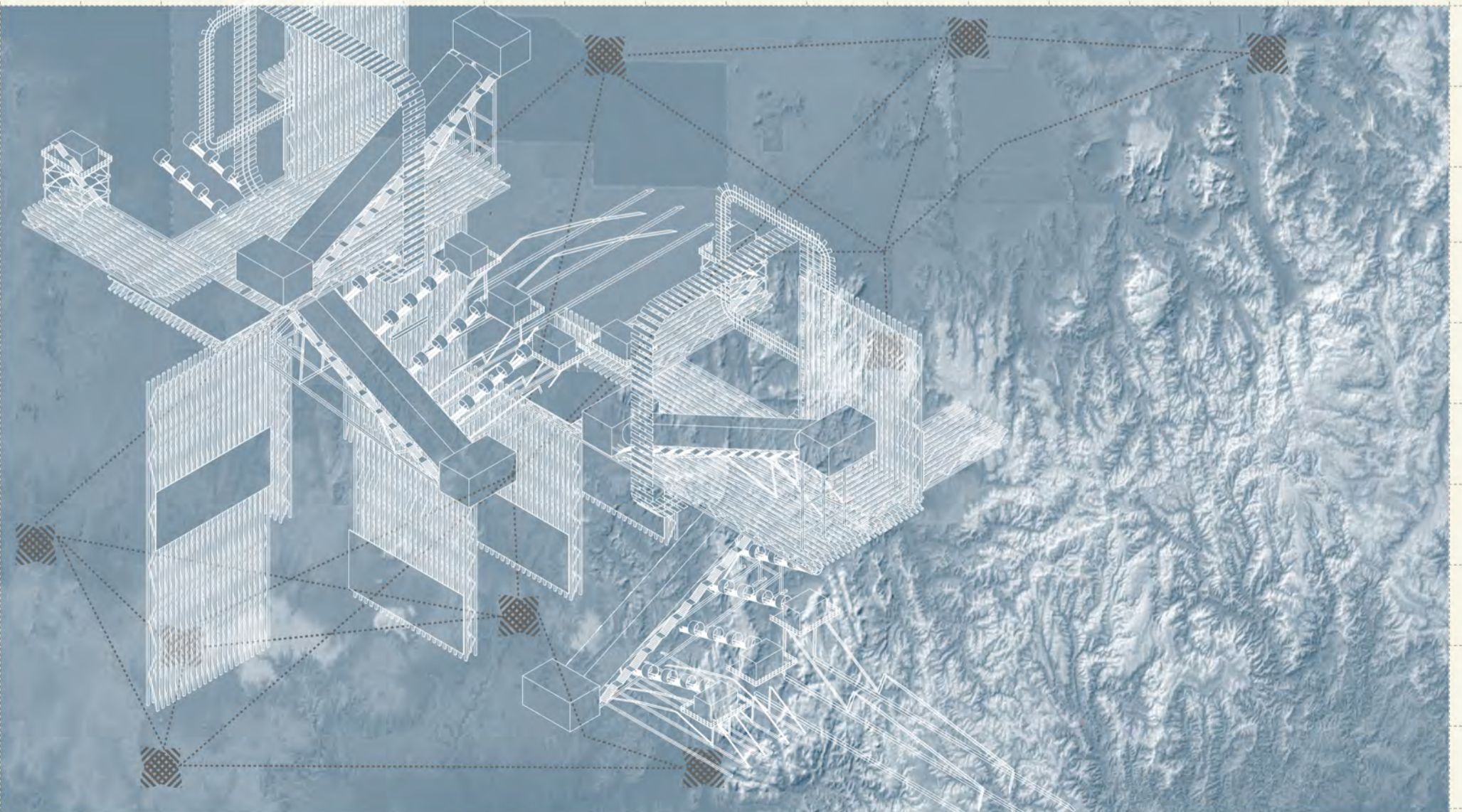
2022



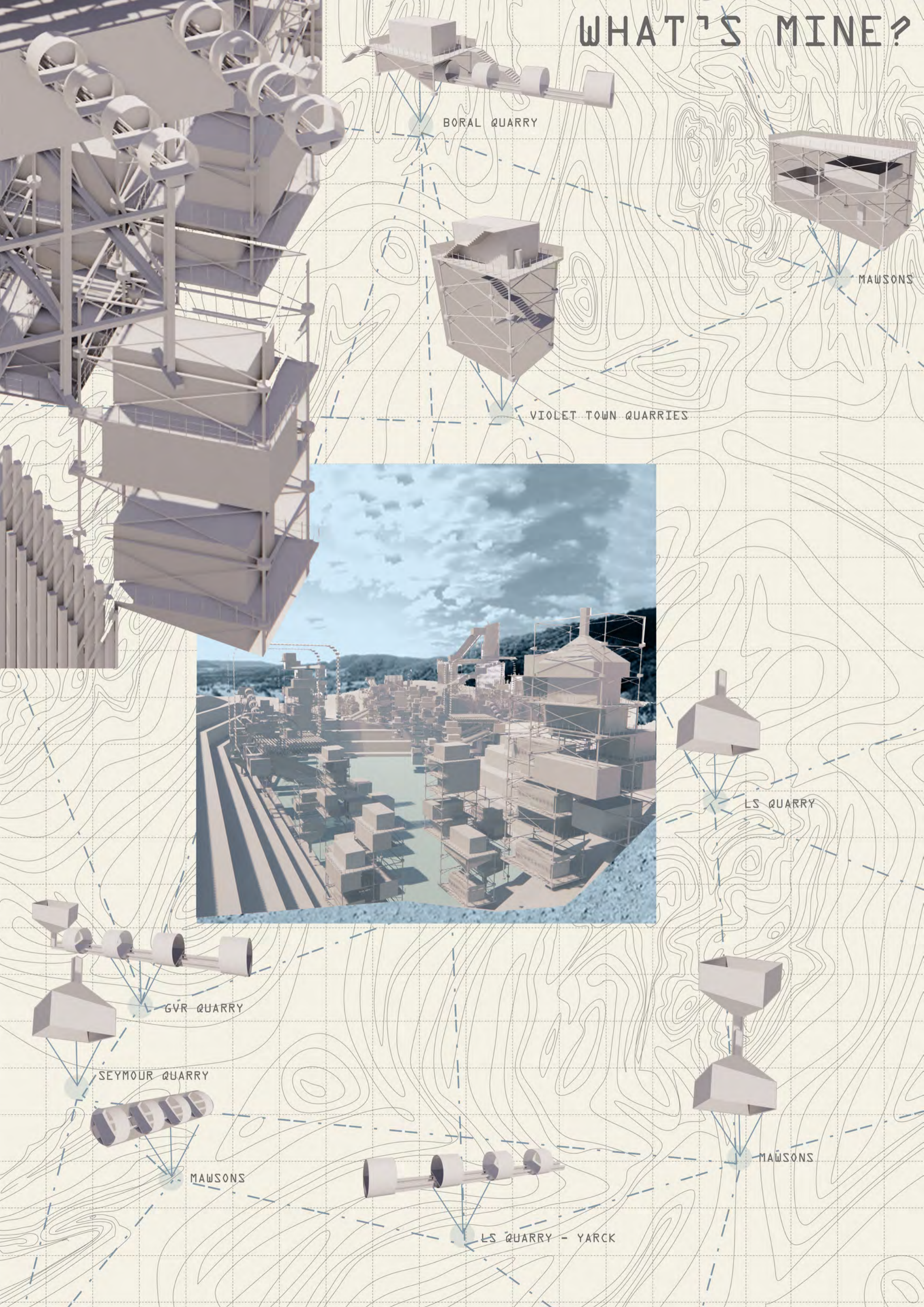
2080



2100



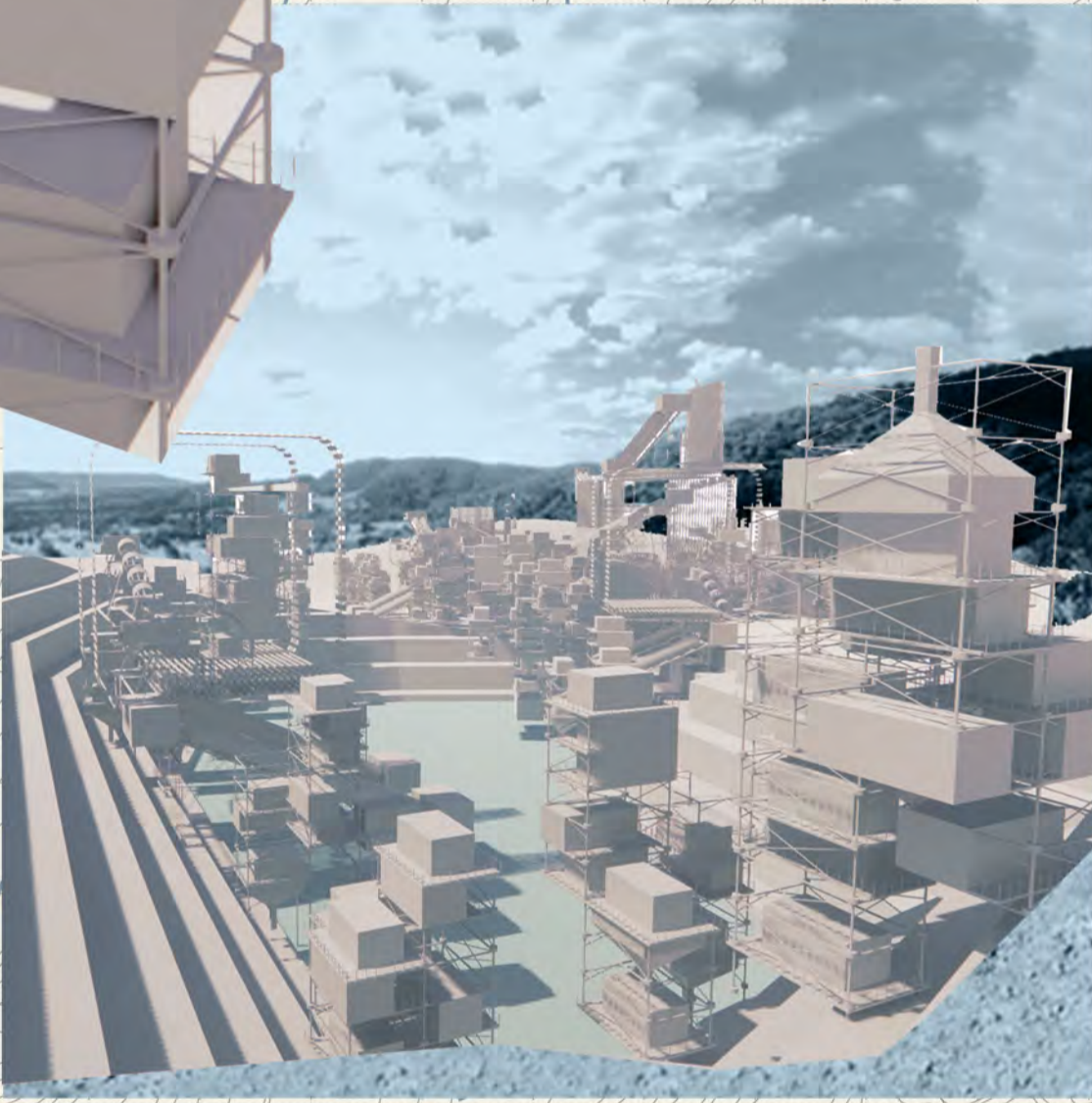
WHAT'S MINE?



BORAL QUARRY

MAWSONS

VIOLET TOWN QUARRIES



LS QUARRY

GVR QUARRY

SEYMOUR QUARRY

MAWSONS

MAWSONS

LS QUARRY - YARCK